



CHANGES IN THE NORTHERN THAI HILLS:

An Examination of the Impact
of Hill Tribe Development Work

1957-1987



Research and Development Center
Payap University
Chiang Mai, Thailand

RESEARCH REPORT NO. 42

CHANGES IN THE NORTHERN THAI HILLS:

An Examination of the Impact of Hill Tribe Development Work

1957-1987

Ronald D. Renard
Prasert Bhandhachat
G. Lamar Robert
Montathip Roongruangsee
Sinth Sarobol
Narong Prachadetsuwat

Research and Development Center
Payap University
Chiang Mai, Thailand
Research Report No. 42

Conducted for

The Thai-Norwegian Church Aid Highland Development Project
Chiang Mai, Thailand

1988

TABLE OF CONTENTS

Acknowledgments	iv	
List of Tables	v	
Photographs	After v	
Chapter 1	Changes in the Hills of Northern Thailand Since 1957	1
Chapter 2	The Environment and Historical Background of the Doi Inthanon Range	11
	Environmental Factors	11
	Historical Background	11
	Introducing the Karen	23
	Thai Political Control of the Doi Inthanon Range	30
	Introducing the Hmong	35
	Technological Change in the Lowlands: Isolation in the Hills	40
Chapter 3	Area-wide Changes in the Doi Inthanon Range: 1957-1987	47
	The Doi Inthanon Range in 1945	47
	Area-wide Changes	56
	Data Collection	73
Chapter 4	Changes in the Seven Villages: 1957-1987	77
	Mae Yang Ha	77
	Wat Chan	97
	Mae Khapu Luang	111

	Huai Nam Chang	122
	Pa Kia Nai	131
	Pa Kluai	141
	Mae Chon	151
Chapter 5	OBSERVATIONS AND SUGGESTIONS FOR FUTURE ACTION	159
	Suggestions	167
	The Role of the Thai-Norwegian Church Aid Highland Development Project	179
References		183
Index		187

Cover design by Sasivimol Srisa-ngar
Pictures show 1) Hmong Elder, Pa Kia Nai; 2) Karen wage
laborers in Hmong cabbage field, Pa Kluai, 3) Sewing
machine and changing dress, Pa Kluai, 4) Hmong, Mae Chon.
Photographs by Ronald D. Renard.

LIST OF TABLES AND ILLUSTRATIONS

Table 1	1985 Population of Study Villages	5
Table 2	Access to Land in Mae Yang Ha	81
Table 3	Hunted Sources of Wild Protein Consumed Monthly	84
Table 4	Headmen of Mae Yang Ha	85
Table 5	Access to Land in Wat Chan	105
Table 6	Hunted Sources of Wild Protein Consumed Monthly	106
Table 7	Population Change of Mae Khapu Villages, 1958-1988	113
Table 8	Recent Headmen of Mae Khapu	113
Table 9	Access to Land in Mae Khapu Luang	115
Table 10	Hunted Sources of Wild Protein Consumed Monthly	117
Table 11	Access to Land in Huai Nam Chang	125
Table 12	Hunted Sources of Wild Protein Consumed Monthly	126
Table 13	One Pa Kia Nai Elder's Mobility History, 1917 to Present	132
Table 14	Access to Land in Pa Kia Nai	134
Table 15	Hunted Sources of Wild Protein Consumed Monthly	136
Table 16	Population Estimates of Pa Kluai	144
Table 17	Access to Land in Pa Kluai	145
Table 18	Hunted Sources of Wild Protein Consumed Monthly	147
Table 19	Access to Land in Mae Chan	153
Table 20	Hunted Sources of Wild Protein Consumed Monthly	155
Illustrations, After Page v		

ACKNOWLEDGMENTS

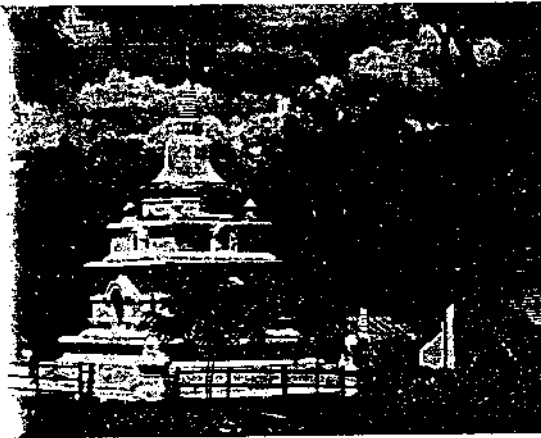
We wish to thank the Thai-Norwegian Church Aid Highland Development Project for assigning the fascinating task of researching this topic to Payap University. We hope our results will be as useful to you as carrying out this project has been interesting to us. We particularly want to thank Mr. Munintorn Tiyayon, Project Director and Mr. Richard S. Mann, Senior Advisor, for supporting our efforts.

We are also indebted to Norwegian Church Aid in Thailand and to Mr. Jan Jernaes, regional representative at the start of the project and to Mr. Arthur Høyen, who succeeded him. Thanks also are due to the United Nations Fund for Drug Abuse Control and the Royal Thai Government, the other two members of the TN-HDP tripartite committee overseeing TN-HDP operations.

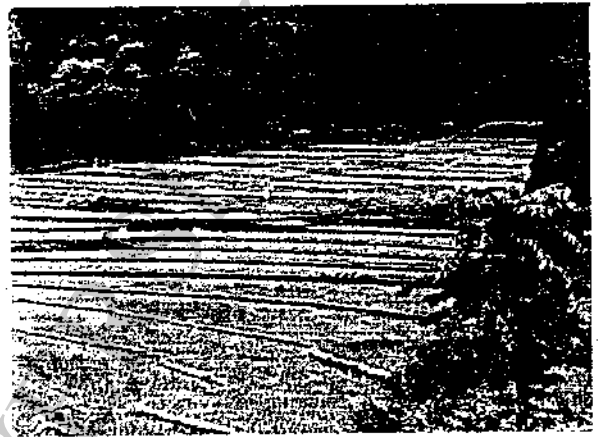
All of the members of the research team owe considerable thanks to Dr. Amnuay Tapingkae, President of Payap University for supporting the work of the Research and Development Center and this project in particular. We also appreciate other members of the Payap University staff who facilitated our endeavors.

We would be remiss if we failed to thank all the Karens and Hmongs whom we bothered with what surely must have seemed endless picayune questions. In all cases, the villagers gave us wonderful support and though they will almost surely never read this page, their help is gratefully recognized.

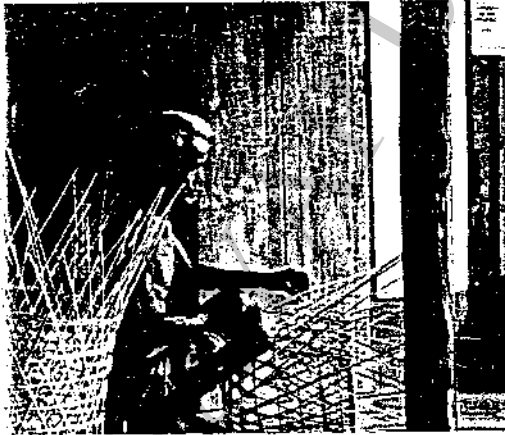
Traditional Patterns



Wat Chan Chedi



Terraced Rice
Mae Khapu Luang



Basketmaking, Mae Yang'Ha



Bamboo, Thatch House,
Mae Chon

Changes in the 1980s



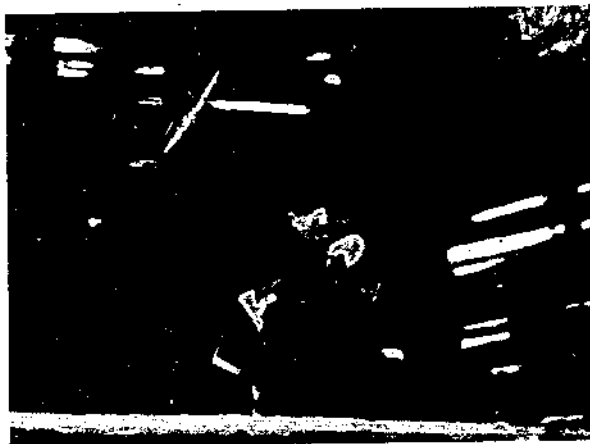
Transplanting Seedlings
Mae Khapu Luang



New Hmong Housing Patterns
Pa Kia Mai



TN-RDP Administrators
in the Field



Karen Girl
Looking to the Future

Changes in the 1950s



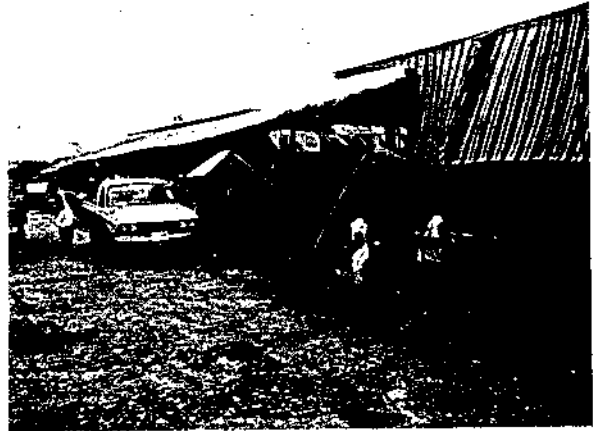
Bo Kao Tin Mining



The First Coffee Tree in Bo Kao



Karen Tin Miners



Bo Kao Market